

The Doll House Elora Group
151 Isabella St. Arthur Ontario Canada N0G1A0 416-479-3674

Doll Making and Repair



SKU: 1066

Porcelain Doll Legs 3.5"

Porcelain Doll Repair Supplies. Porcelain Doll legs are pale flesh color. 3.5" long with top circ. Of 3.5"

Price : \$3.99

[More Details](#)



SKU: 920-ooak

Porcelain Doll Legs 1"

Lovely hand poured, painted and glazed doll legs. Antique style. Approx. 1" long with a top circ. of 1.25"

Price : \$4.99

[More Details](#)



SKU: L9-ooak

Porcelain Doll Legs 2.5"

Hand poured doll legs are approx 2.5" long with a foot 1" long. Top circ. of 2"

Price : \$3.99

[More Details](#)



SKU: L8-ooak

Porcelain Doll Legs 3.75"

Porcelain doll leg is 3.75" long with a top circ. of 4". Foot is 2" long.

Price : \$3.99

[More Details](#)



SKU: L10-ooak

Porcelain Doll Legs 1.75"

White glazed doll legs are approx 1 3/4" long, foot is 1" long and top circ. is 2"

Price : \$3.99

[More Details](#)



SKU: 1433-ooak

Porcelain Doll Legs 3.5"

Hand poured and painted antique style doll legs. Very nicely done. Legs are approx. 3.5" long with a top circ. of 3.25". Foot is approx 1.25" long. A lovely set of legs.

Price : \$14.99

[More Details](#)



SKU: 1791-ooak

Porcelain Doll Legs 9"

Porcelain Doll legs are approx. 1.5" long with a 1" foot. Top circ. 1.3/4" pale fleshtone.

Price : \$2.99

[More Details](#)



SKU: 984-ooak

Porcelain Doll Legs .5"

Tiny porcelain doll legs. Approx .5" long with a top circ. of 1"

Price : \$0.99

[More Details](#)



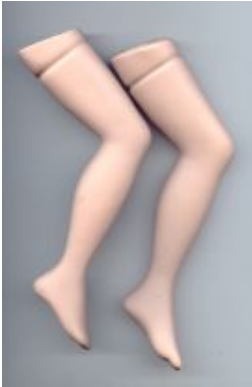
SKU: 1768-ooak

Porcelain Doll Legs 4.75"

Doll legs are approx 4.75" long, foot is 1.5" top circ. of 3". White painted shoes with molded bow. For a lady style doll approx. 18-20"

Price : \$4.99

[More Details](#)



SKU: L4-ooak

Porcelain Doll Legs 8"

Lovely bent porcelain doll legs are approx 8" long. Foot is 2.25" long and the top circ. is 6". Suitable for a sitting doll.

Price : \$7.99

[More Details](#)



SKU: 1792-ooak

Porcelain Doll Legs 2"

Little porcelain legs are approx. 1" long. Foot is approx 3/4" long and the top circ. is 1 3/4". Pale fleshtone.

Price : \$1.99

[More Details](#)



SKU: 687

Porcelain Doll Legs 5"

Replacement parts for porcelain dolls. These porcelain doll legs are 5 inch long, the foot is 2 inch long. Top circ. is 5". Bent child/baby style leg in Native American Skin Tone. Suitable for a 14- 16" doll.

Price : \$3.99

[More Details](#)



SKU: 980-ooak

Porcelain Doll Legs 1.25"

Lovely hand poured, painted and glazed doll legs. Antique style. Approx. 1.5" long with a top circ. of 1.25"

Price : \$4.99

[More Details](#)



SKU: L2-ooak

Porcelain Doll Legs 2"

Beautiful hand poured and painted glazed porcelain doll legs. Approx 2" long with a 1/2" foot and a 1 3/4" circ.

Price : \$6.99

[More Details](#)



SKU: 712-cathaymod

Porcelain Doll Legs 4"

Doll legs are approx 4" long. Foot length is 1 7/8". top circ. is 4" Light tone porcelain

Price : \$3.99

[More Details](#)



SKU: 884

Porcelain Doll Legs 4"

Baby doll legs are approx 4" long with a foot of 1.5" long, top circ. is 5" bent style. For a baby doll approx 12" tall.

Price : \$3.99

[More Details](#)



SKU: L7-ooak

Porcelain Doll Legs 4.5"

Lady style porcelain leg with black painted shoes. Legs are approx. 4.5" long with a 3" top circ. Foot is 1.5" long.

Price : \$6.99

[More Details](#)



SKU: 1765-ooak

Porcelain Doll Legs 5.5"

Lady style porcelain legs are approx 5.5" long. Foot is 2" long and the top circ is 3.25". Suitable for a lady style doll approx 20-22"

Price : \$5.99

[More Details](#)



SKU: 781

Porcelain Doll Legs 4"

Doll legs are approx 4" long. Foot length is 1 7/8". top circ. is 4" Medium tone porcelain.

Price : \$3.99

[More Details](#)



SKU: 1053-tellonlady

Porcelain Doll Legs 3.5"

Porcelain Doll Repair Supplies. Lady Style porcelain doll Leg, approx 3.5 inch long, with molded shoe. Sparkles on white shoes. For a doll approx 16" tall.

Price : \$3.99

[More Details](#)



SKU: 1228-ooak

Porcelain Doll Legs 1.5"

Hand poured pale bisque legs. 1.5" long with a 1/2" foot. 1.25" circ.

Price : \$1.99

[More Details](#)



SKU: 1285-ooak

Porcelain Doll Legs 1.25"

Tiny doll legs are 1.25" long, with a 3/4" foot.

Price : \$1.99

[More Details](#)



SKU: 1233-worldchildren

Porcelain Doll Legs 3.10"

World Children porcelain legs in medium skin tone. Approx 3 1/8" long with a 2" foot.

Price : \$4.99

[More Details](#)



SKU: 99-ooak

Porcelain Doll Legs 2.5"

Hand poured doll legs approx 2.5" long 2" top circ. Medium Tone Bisque.

Price : \$4.99

[More Details](#)



SKU: 1346-ooak

Porcelain Doll Legs 1.5"

Hand poured and painted doll legs are approx 1.5" long with a 3/4" foot. Perfect for dollhouse size dolls.

Price : \$3.99

[More Details](#)



SKU: 1351-ooak

Porcelain Doll Legs 1"

Lovely hand poured miniature doll legs are approx. 1" long with a 1/4" foot. Hand painted.

Price : \$3.99

[More Details](#)



SKU: 677-ooak

Porcelain Doll Legs 3.75"

Hand poured white bisque legs. 3.75" long with a 1.25" foot. 3.25" circ.

Price : \$6.99

[More Details](#)



SKU: 1529-firstcommunion

Porcelain Doll Legs 5"

Porcelain doll legs are approx 5" long (total bent leg length) with a foot approx 1 3/4". Medium tone porcelain. For a doll approx 16" tall. Can be used for sitting or kneeling style.

Price : \$3.99

[More Details](#)



SKU: 1537-ooak
Porcelain Doll Legs 2"
Antique bent baby legs. Approx 2" long with a 1/2" foot.

Price : \$4.99

[More Details](#)



SKU: 1400-ooak
Porcelain Doll Legs 1.5"
Tiny ceramic doll boots 1.5" with a 1" foot.

Price : \$1.99

[More Details](#)



SKU: 88-ooak
Porcelain Doll Legs 1"
Lovely hand poured, painted and glazed doll legs. Antique style. Approx. 1" long with a top circ. of 1.25"

Price : \$2.99

[More Details](#)



SKU: 98-ooak
Porcelain Doll Legs 1"
Lovely hand poured miniature doll legs are approx. 1" long with a 1/4" foot. Hand painted.

Price : \$3.99

[More Details](#)



SKU: 101-ooak
Porcelain Doll Legs 1.25"
Lovely hand poured miniature doll legs are approx. 1.5" long with a 1/2" foot. Hand painted. Top circ. 1.5"

Price : \$3.99

[More Details](#)



SKU: 679a-ooak

Porcelain Doll Legs 3.5"

Doll legs are approx 3.5" long with a top circ. of 3.25" . High glazed finish.

Price : \$4.99

[More Details](#)



SKU: 688a-ooak

Porcelain Doll Legs 4.75"

Hand poured pale bisque legs. 4.75" long , hooks must be attached to string with elastic cord onto a porcelain body.

Price : \$7.99

[More Details](#)



SKU: 846-ooak

Porcelain Doll Legs 1"

Lovely hand poured legs , hand painted. Only 1" long with a top circ. of 1" and a foot length of 1/4"

Price : \$2.99

[More Details](#)



SKU: 234a-ooak

Porcelain Doll Legs 4"

Hand poured doll legs are approx 4" long. Made to attach hooks for stringing to a porcelain body. Antique style. Light flesh tone.

Price : \$4.99

[More Details](#)



SKU: 1674-ooak

Porcelain Doll Legs 3.5"

Black porcelain doll legs are approx. 3.5" long with a top circ. of 3.25 and a foot length of 1.5". Hand poured.

Price : \$4.99

[More Details](#)



SKU: 1675-ooak

Porcelain Doll Legs 3"

Black porcelain doll legs are approx. 3" long with a top circ. of 3" and a foot length of 1.75". Hand poured.

Price : \$4.99

[More Details](#)



SKU: 1679-ooak

Porcelain Doll Legs 3"

Hand poured medium bisque legs. 3" long with a 3" circ. and a 1.25" foot. Pale bisque.

Price : \$4.99

[More Details](#)



SKU: 1680-ooak

Porcelain Doll Legs 2.5"

Hand poured medium bisque legs. 2.5" long with a 1" foot. 2.5" circ.

Price : \$4.99

[More Details](#)



SKU: L3-ooak

Porcelain Doll Legs 1.75"

Versatile porcelain doll legs have ribbed top (looks like socks) with a brown boot with painted buckle. Approx 1 3/4" long with a 1" foot. 2" top Circ.

Price : \$3.99

[More Details](#)



SKU: 1688-ooak

Porcelain Doll Legs 3.5"

Hand poured doll legs, approx 3.5" long with a top circ. of 3.75" and a 1.5" foot. Black, hand painted shoes and sox.

Price : \$4.99

[More Details](#)



SKU: 1690-ooak

Porcelain Doll Legs 2"

Hand poured baby doll legs. Bent style, hooks must be inserted for stringing onto porcelain doll body. Approx 2" long with a 1" foot.

Price : \$1.99

[More Details](#)



SKU: L5-ooak

Porcelain Doll Legs 3.5"

Untinted porcelain doll legs. Approx 3.5" long with a 1 3/4" foot. Top circ. is 3.5"

Price : \$1.99

[More Details](#)



SKU: 1694-ooak

Porcelain Doll Legs 2"

Hand poured baby doll legs. Bent style, hooks must be inserted for stringing onto porcelain doll body. Approx 2" long with a 1/2" foot. Black porcelain.

Price : \$2.99

[More Details](#)



SKU: L11-ooak

Porcelain Doll Legs 1.75"

Small dark porcelain doll legs to string onto a porcelain body. 1 3/4" long with a .5" foot.

Price : \$0.99

[More Details](#)

SKU: 860-ooak

Porcelain Doll Legs 3.25"

Small hand poured legs are designed to attach with elastic cord to a porcelain body. Hooks will need to be installed. Legs are 3.25" long with a 1/2" top length.

[More Details](#)



SKU: 789-ooak

Porcelain Doll Arms 3.75"

Lovely hand poured and painted porcelain doll arms. pale white bisque, approx 3 3/4" long with a 2 3/4" top circ. Antique style.

Price : \$6.99

[More Details](#)



SKU: 33-ooak

Porcelain Doll Arms 1.5"

Hand poured and painted doll arms, light flesh tone. Approx 1.5" long with a top circ. of 1.5"

Price : \$3.99

[More Details](#)



SKU: 991-ooak

Porcelain Doll Arms 1"

Hand poured and glazed white porcelain doll arms. Approx. 1" long with a circ. of 1.25" Antique style.

Price : \$3.99

[More Details](#)



SKU: A9-ooak

Porcelain Doll Arms 4.5"

Porcelain baby arms are slightly bent, chubby style. Approx 4.5" long with a top circ. of 4"

Price : \$4.99

[More Details](#)



SKU: 766-ooak

Porcelain Doll Arms 2"

Lovely hand poured white glazed doll arms. Approx 2" long with a top circ. of 1.75"

Price : \$4.99

[More Details](#)



SKU: 681-sittingnative

Porcelain Doll Arms 4.5"

Replacement Doll Parts. Doll arms are approx 4.5" long, slightly bent. 5.5" circ. Child style, Native American Skin tone, for a doll 14-16".

Price : \$3.99

[More Details](#)



SKU: 1770-ooak

Porcelain Doll Arms 2"

Baby style arms are approx. 2" long with a top circ. of 2.5". For a doll approx 12" in size. Dark porcelain Bisque.

Price : \$3.99

[More Details](#)



SKU: 326

Porcelain Doll Arms 3"

Porcelain Doll Repair Supplies. Porcelain replacement doll arms are approx 3" long.

Price : \$2.99

[More Details](#)



SKU: 1457-ooak

Porcelain Doll Arms 4"

Lovely hand poured and painted porcelain doll arms. Tinted bisque, approx 4" long with a 3 .75" top circ.

Price : \$8.99

[More Details](#)



SKU: 1184-smalljointed

Porcelain Doll Arms 3"

Doll Repair Parts. Porcelain doll arms are 3 inch long with an opening at top for stringing onto porcelain body.

Price : \$0.99

[More Details](#)



SKU: 864-ooak

Porcelain Doll Arms 1.75"

Hand poured doll arms are made to attach to a porcelain body with elastic cord. Approx. 1.3/4" long, the top edge is 1/2" across. Light flesh tone.

Price : \$3.99

[More Details](#)



SKU: A12-ooak

Porcelain Doll Arms 2"

**Hand poured porcelain doll arms made to string onto a porcelain body.
Approx. 2" long**

Price : \$1.99

[More Details](#)



SKU: 308

Porcelain Doll Arms 6"

**Bent doll arms for baby doll. Approx 6" long, with top circ. of 4.25". For a
18" doll**

Price : \$4.99

[More Details](#)



SKU: 552

Porcelain Doll Arms 5-6"

**Large baby arms. Approx 6" long with a top cir. of 6.5". For a large 24" baby
doll. Might not be exactly as shown.**

Price : \$7.99

[More Details](#)



SKU: 838-swingdoll

Porcelain Doll Arms 3.5"

**Porcelain doll arms slightly bend child style. Approx 3.5" long with a top
circ. of 3"**

Price : \$2.99

[More Details](#)



SKU: 842-ooak

Porcelain Doll Arms 1.5"

Tiny 1 1/2" arms , hand poured, pale bisque. Top circ. 1.5"

Price : \$2.99

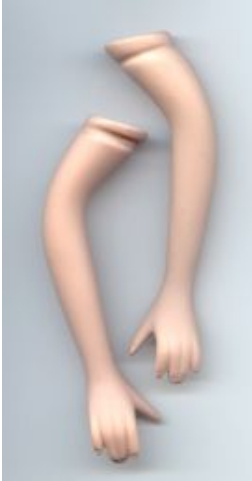
[More Details](#)



SKU: A16-ooak
Porcelain Doll Arms 1.25"
Hand poured doll hands are approx. 1.25" long with a 2" circ.

Price : \$2.99

[More Details](#)



SKU: A13-ooak
Porcelain Doll Arms 4.75"
Lady style porcelain arms are approx 4 3/4" long with a top circ. of 2.5".
Light flesh tone.

Price : \$5.99

[More Details](#)



SKU: 801
Porcelain Doll Arms 5.5"
Pair of doll arms are approx 5.5" long. Top circ. is 4.5"

Price : \$4.99

[More Details](#)



SKU: 1030-ooak
Porcelain Doll Arms 1.25"
Tiny little doll arms are only 1.25" long. Pale tinted bisque.

Price : \$0.99

[More Details](#)



SKU: 1458-ooak

Porcelain Doll Arms 3.75"

Probably the prettiest set of arms I have ever seen. The jewels are actually inlaid into the porcelain, not just glued on top. Pretty ruby color. Arms are very pale porcelain, hand poured and painted. approx 3 3/4" long with a top circumference of 3.75".

Price : \$19.99

[More Details](#)



SKU: 858

Porcelain Doll Arms 5.5"

Arms are 5.5" long. 5" top circ. Pale flesh porcelain.

Price : \$4.99

[More Details](#)



SKU: 1764-ooak

Porcelain Doll Arms 5"

Lovely lady doll porcelain arms. Approx. 5" long. top circ. of 3" Dark Bisque. Recommended size for a 20-22" lady style doll.

Price : \$5.99

[More Details](#)



SKU: 1043-sittingdoll

Porcelain Doll Arms 4"

Porcelain Doll Repair Supplies. Porcelain replacement doll arms are approx 4" long.

Price : \$4.99

[More Details](#)



SKU: 1070

Porcelain Doll Arms .75"

Tiny tinted porcelain doll arms for a miniature doll. Only 3/4" long.

Price : \$1.49

[More Details](#)



SKU: 1232-ooak

Porcelain Doll Arms 1"

Tiny little doll arms are only 1" long. 3/4" top circ. Pale tinted bisque.

Price : \$1.99

[More Details](#)



SKU: 127-ooak

Porcelain Doll Arms 1.5"

Hand poured doll arms, light flesh tone. Approx 1.5" long with a top circ. of 1.5"

Price : \$2.99

[More Details](#)



SKU: A10-ooak

Porcelain Doll Arms 2"

Untinted white porcelain hands are approx. 2" long. 2.75" circ.

Price : \$2.99

[More Details](#)



SKU: 1235-worldchildren

Porcelain Doll Arms 2.5"

Porcelain arms from world children, medium skin tone. Approx 2.5" long with a 3.5" top circ. They are slightly bent style.

Price : \$4.99

[More Details](#)



SKU: 1210

Porcelain Doll Arms 3.5"

porcelain doll arms are 3.5" long with a 3" top circ.

Price : \$3.99

[More Details](#)



SKU: 1222-ooak

Porcelain Doll Arms 3.5"

Hand poured pale bisque baby arms, hooks must be set in arms for stringing to body. Arms are approx 3.5" long.

Price : \$2.99

[More Details](#)



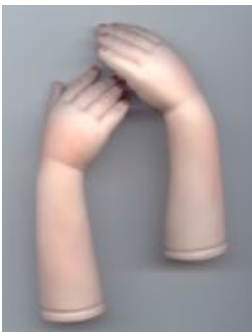
SKU: 1352-ooak

Porcelain Doll Arms 1"

Tiny hand poured doll arms are only 1" long. Tinted bisque.

Price : \$2.99

[More Details](#)



SKU: 47-ooak

Porcelain Doll Arms 4.5"

Hand poured and painted porcelain doll arms. Tinted bisque, approx 4.5" long with a 4" top circ.

Price : \$7.99

[More Details](#)



SKU: 102-ooak

Porcelain Doll Arms 4.5"

Hand poured porcelain doll arms. Approx 4.5" long with a 3.5" top circ. Dark skin tone.

Price : \$5.99

[More Details](#)



SKU: 503-ooak

Porcelain Doll Arms 4"

Hand poured pale bisque doll arms. Antique style, approx. 4" long with a top circ. of 3"

Price : \$6.99

[More Details](#)



SKU: 1426-ooak

Porcelain Doll Arms 2.75"

Nicely detailed vintage arms are color wash over white porcelain. Approx 2 3/4" long with a top circ. of 2 3/4"

Price : \$3.99

[More Details](#)



SKU: 494-ooak

Porcelain Doll Arms 4"

Hand poured and painted doll arms, approx. 4" long made to string onto a porcelain body with elastic cord.

Price : \$6.99

[More Details](#)



SKU: 171-ooak

Porcelain Doll Arms 2"

Hand poured porcelain doll arms. Approx. 2" long with a circ. of 1" lady style.

Price : \$1.99

[More Details](#)



SKU: 208-ooak

Porcelain Doll Arms 1"

Hand poured porcelain doll arms. Approx. 1" long with a circ. of 1" .

Price : \$2.99

[More Details](#)



SKU: 232-ooak

Porcelain Doll Arms 5.5"

Hand poured medium tone porcelain doll arms are approx. 5.5" long with a top circ. of 5". Suitable for a larger baby doll.

Price : \$7.99

[More Details](#)



SKU: 692a-ooak

Porcelain Doll Arms 1.5"

Porcelain baby hands, lovely hand poured and painted set is approx 1.5" long with a top circ. of 2.25"

Price : \$4.99

[More Details](#)



SKU: A14-ooak

Porcelain Doll Arms 2.5"

Porcelain doll arms, dark flesh tone. Approx. 2.5" long with a top circ. of 2.5"

Price : \$3.99

[More Details](#)



SKU: A8-ooak

Porcelain Doll Arms 5"

Porcelain doll arms are approx. 5" long, slightly bent style, with a top circ. of 4.5"

Price : \$4.99

[More Details](#)



SKU: 9-ooak

Porcelain Doll Arms 2"

Hand poured doll arms, med. flesh tone. Approx 2" long with a top circ. of 1.5"

Price : \$3.99

[More Details](#)



SKU: 42a-ooak

Porcelain Doll Arms 1"

Tiny white bisque arms are approx 1" long with a top circ. of 1"

Price : \$2.99

[More Details](#)

SKU: 67-ooak

Porcelain Doll Arms 2"

Hand poured and painted porcelain doll arms. Approx. 2" long with a circ. of

Price : \$5.99

[More Details](#)



SKU: 68-ooak

Porcelain Doll Arms 1.5"

Hand poured porcelain doll arms. Approx. 1.5" long . Made to be strung with elastic cord onto a porcelain doll body.

Price : \$3.99

[More Details](#)



SKU: 789a-ooak

Porcelain Doll Arms 2.25"

Hand poured and glazed white porcelain doll arms. Approx. 2.25" long with a circ. of 1.5" Antique style.

Price : \$2.99

[More Details](#)

SKU: 87-ooak

Porcelain Doll Arms 3"

Hand poured and painted doll arms, approx. 3" long made to string onto a porcelain body with elastic cord.

Price : \$4.99

[More Details](#)



SKU: 98a-ooak

Porcelain Doll Arms 3"

Porcelain baby hands, lovely hand poured and painted set is approx 3" long with a top circ. of 3"

Price : \$5.99

[More Details](#)



SKU: 1528-firstcommunion

Porcelain Doll Arms 4.5"

Bent porcelain doll arms are approx 4.5" long with a 3.25" circ. For a doll approx 16" tall. Medium tone bisque

Price : \$3.99

[More Details](#)



SKU: 1682-ooak

Porcelain Doll Arms 4"

Hand poured doll arms. Approx 4" long with a top circ. of 3"

Price : \$3.99

[More Details](#)



SKU: 1685-ooak

Porcelain Doll Arms 3"

Hand poured and painted doll arms. Approx 3" long with a top circ. of 2.5"

Price : \$4.99

[More Details](#)



SKU: A4-ooak

Porcelain Doll Arms 3.5"

Brown porcelain doll arms are approx. 3.5" long with a top circ. of 2 3/4"

Price : \$4.99

[More Details](#)



SKU: A2-ooak

Porcelain Doll Arms 2"

Lovely hand poured glazed porcelain doll arms. Approx 2" long with a top circ. of 1.5"

Price : \$3.99

[More Details](#)



SKU: A3-ooak

Porcelain Doll Arms 3"

Slender doll arms are approx 3" long with a top cir. of 1.5", for a small doll approx 8" -10" tall

Price : \$3.99

[More Details](#)



SKU: 977-ooak

Porcelain Doll Arms .75"

Tiny doll arms are only 3/4" long with a circ. of 1"

Price : \$1.99

[More Details](#)



SKU: 952-ooak

Porcelain Doll Arms 1.75"

**Nice little hand poured doll arms. Approx. 1.75" long with a top circ. of 1.5".
Pale Flesh tone**

Price : \$1.99

[More Details](#)



SKU: H55-ooak

Porcelain Doll Head Molded Hair 3"

**Lovely crisp detail, 3" doll head hand poured. face is approx 2" and the
shoulder is 2.5" across. Untinted bisque.**

Price : \$5.99

[More Details](#)



SKU: 1269

Porcelain Doll Head Molded Hair 2.5"

**Pretty porcelain head is approx 2.75" high with a 2" shoulder. The face is
approx 2", complete with 1 3/4" arms to make a lovely victorian doll or angel
doll.**

Price : \$4.99

[More Details](#)



SKU: H53-ooak

Porcelain Doll Head Molded Hair 4"

**Pretty hand poured doll head in untinted bisque. 4" high with a 2.5" face.
Shoulder is 2.5" across.**

Price : \$5.99

[More Details](#)



SKU: 1029-cathaybaby

Porcelain Doll Head 4"

**Pretty little head is approx 4" high including neck, it is 3.5" from top to chin.
Blue eyes with lashes and brown wig. 9.5" circ. for a baby doll approx
12-14" long.**

Price : \$5.99

[More Details](#)



SKU: H43-ooak

Porcelain Doll Head 4.5"

Joet Mold, hard fired, ready to sand and paint. This head is approx 4.5" high with an 11" circ. Eye opening of 16mm.

Price : \$5.99

[More Details](#)



SKU: 371-ooak

Porcelain Doll Head 3" Antique

Lovely little antique doll head. No cracks or chips but does have some paint rubbed off. Marked on the back S (star)H - 1909 10/0 Approx 3" high.

Price : \$19.99

[More Details](#)



SKU: H46-ooak

Porcelain Doll Head 3.5"

K*R mold, 3.5" high doll head, hand poured and painted. 8.5" circ. with an eye opening of 12mm

Price : \$6.99

[More Details](#)



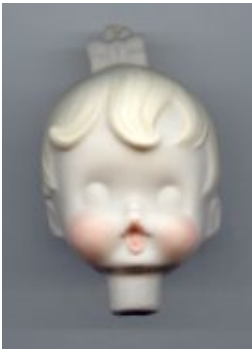
SKU: H48-ooak

Porcelain Doll Head 6"

Lovely hand poured doll head is approx 6" tall including shoulder plate. Shoulder is 5" across and the head has an 11.5" circ. Eye opening is 18mm

Price : \$7.99

[More Details](#)



SKU: 1254-ooak

Porcelain Doll Head Molded Hair 3.5"

Handpoured and partly painted high fired head is approx 3.5" tall , the face is approx 2.5"

Price : \$2.99

[More Details](#)



SKU: 1772-cathaycrimp

Porcelain Doll Head 5"

Doll head with blonde crimped hair and blue eyes. Approx 5" high with the face approx 3.5" from forehead to chin. For use on a doll approx. 16" tall.

Price : \$5.99

[More Details](#)



SKU: 342-allwellgreensatin

Porcelain Doll Head 5.5"

5.5 inch porcelain Doll Head. Pretty head on shoulder plate, head is turned to the side. Green inset eyes, and a lovely straight chestnut wig. Head is approx 5.5" from top to bottom of shoulder plate, and circumference is approx 9".

Price : \$4.99

[More Details](#)



SKU: 352

Porcelain Doll Head 5"

5" Baby boy porcelain head. What a cutie with his new tooth showing. Inset blue eyes and brown attached wig. This head is 5" from top to bottom of neck, 12 inch diameter.

Price : \$3.99

[More Details](#)



SKU: 343-awbride

Porcelain Doll Head 6"

Doll head is approx 6" from top to bottom of shoulder plate. Lovely inset brown eyes and brown/black wig attached. Pretty neck and bust detail. Will make a doll approx 18-20".

Price : \$6.99

[More Details](#)



SKU: 241-ooak

Porcelain Doll Head Molded Hair 1.5"

Porcelain set includes old man / santa head and white mitten porcelain hands. Head is approx. 1.5" high.

Price : \$3.99

[More Details](#)



SKU: H47-ooak

Porcelain Doll Head 4"

K*R Mold, 4" doll head is hand poured and fired. 11" circ. with an eye opening of 15mm

Price : \$5.99

[More Details](#)



SKU: 825-ooak

Porcelain Doll Head Molded Hair 1.5"

Hand poured and painted dollhouse size head. Approx. 1.5" high with a 1" face. Shoulder is 3/4" across.

Price : \$4.99

[More Details](#)



SKU: 331-ooak

Make Your Own Mermaid Parts

Make your own mermaid doll parts. Includes wig, head, bust and arms. No body pattern is included.

Price : \$9.99

[More Details](#)



SKU: 239

Porcelain Doll Head 4.5"

Porcelain doll head for repair or doll making. Head is approx. 3.5" from top to chin, 4.5" from top to bottom of neck, and has a circ. of 9.5". For approx 16" doll.

Price : \$4.99

[More Details](#)



SKU: H54-ooak

Porcelain Doll Head Molded Hair 4.5"

Bylo Baby Head is 4.5" high, 11" circ. and eye opening is 11mm. Hand poured ready to paint.

Price : \$5.99

[More Details](#)



SKU: H56-ooak

Porcelain Doll Head 4"

Hand poured and painted. Inset brown eyes. Head is approx 4" high with an 8.25" circ. Face is approx 3" deep.

Price : \$9.99

[More Details](#)



SKU: 1562

Porcelain Doll Head 5"

Pretty lady style doll head is 5" high from top of head to bottom of shoulder plate. Would make up a 16" doll. The head has a circ. of 8.5" and the shoulder plate is 2.25" across. Blue inset eyes and blonde updo wig. Pierced ears.

Price : \$4.99

[More Details](#)



SKU: H20-ooak

Porcelain Doll Head 4.5"

Hilda hand poured head, 4.5" high with a 10.5" circ. Eye opening is 12mm. Hard fired ready to sand and paint.

Price : \$6.99

[More Details](#)



SKU: H9-ooak

Porcelain Doll Head 6"

Stunning doll head is 6" tall, shoulder is 5" across. The head circ. is 10". suitable for a doll approx 20" tall. Blue inset eyes with applied lashes, blonde curls, flowers in her hair as well as earrings and necklace. Truly a stunning doll head.

Price : \$19.99

[More Details](#)



SKU: 351a-ooak

Porcelain Doll Head 1.5"

Hand poured doll head approx. 1.5" long.

Price : \$2.99

[More Details](#)



SKU: H69-ooak

Porcelain Doll Head 3"

Hand poured baby head is approx 3" high with a 7.25" circ. and a 2.5" deep face.

Price : \$3.99

[More Details](#)



SKU: H70-ooak

Porcelain Doll Head Molded Hair 3"

Hand poured baby head is approx 3" high with a 7.5" circ. head. Face is 2.5" deep.

Price : \$3.99

[More Details](#)



SKU: 1532-ooak

Porcelain Doll Head 2.75"

Pretty antique doll head is approx 2.75" high including neck. Face is approx 2" and the neck has a diameter of approx 3.4". Marking on back is crossed bones with the letters GK N 185 14/0

Price : \$19.99

[More Details](#)



SKU: H63-ooak

Porcelain Doll Head 5.5"

Lovely oriental doll head. Approx. 5.5" high with a 5" shoulder plate. Eye opening is 15mm.

Price : \$8.99

[More Details](#)



SKU: H61-ooak

Porcelain Doll Head 3.5"

Playtime in Spring mold. Head is approx. 3.5" high with a 9.5" circ. Face is 2.75" deep. Eye opening is 11mm. Hand poured.

Price : \$4.99

[More Details](#)



SKU: H72-ooak

Porcelain Doll Head 3"

Playtime in Summer Mold. Head hand poured, and fired. Approx. 3" high with a 9" circ. The face is 2 3/4" long. Eye opening is 14mm.

Price : \$4.99

[More Details](#)



SKU: 1533-ooak

Porcelain Doll Head 2"

Pretty antique doll head is approx 2" high including neck. Face is approx 1.5" . Marking on back is an anchor with the letters Germany

Price : \$19.99

[More Details](#)



SKU: H45-ooak

Porcelain Doll Head 4"

Hand poured doll head is 4" high with a 3.5" face. 10" circ. with an eye opening of 15mm

Price : \$5.99

[More Details](#)



SKU: H73-ooak

Porcelain Doll Head 4"

Hand poured doll head approx. 4" high with a 9" circ. 9" circ. and an eye opening of 11mm.

Price : \$4.99

[More Details](#)



SKU: H41-ooak

Porcelain Doll Head 4.5"

Kaboul Mold, hard fired, ready to sand and paint. This head is approx 4.5" high with an 11" circ. Eye opening of 18mm.

Price : \$5.99

[More Details](#)



SKU: 1279-ooak

Porcelain Doll Head Molded Hair 2.5"

Small head is hard fired, hand poured and painted. Approx 2.5" tall with 2" across shoulder plate. 1.5" face. Very pretty mold .

Price : \$4.99

[More Details](#)



SKU: 1061-indiansitting

Porcelain Doll Head 4.5"

Porcelain doll head for repair or doll making. Head is approx. 3.5" from top to chin, 4" from top to bottom of neck, and has a circ. of 11". For approx 14-16" doll. Native American Skin Tone.

Price : \$5.99

[More Details](#)



SKU: 719-cathaymod

Porcelain Doll Head 5"

Porcelain doll head has crazy red hair, green inset eyes with lashes, she is approx 5" from top of head to bottom of neck. Face is approx 4" long.

Price : \$5.99

[More Details](#)



SKU: 792

Porcelain Doll Head 4.5"

Pretty porcelain doll head with lovely big blue inset eyes. Short blonde wig makes this head suitable for a little girl or a little boy. Head is approx 4.5" high from top of head to bottom of neck. Circ. is 10.5"

Price : \$4.99

[More Details](#)



SKU: H50-ooak

Porcelain Doll Head 4.25"

Heubach mold, total height approx 4.25" with a 3" deep face. Shoulder is 3" across and the eye opening is 11 mm. This head is heavy poured and of a pale flesh tone.

Price : \$6.99

[More Details](#)



SKU: H28-ooak

Porcelain Doll Head 4"

Hand poured and painted doll head 4" high. 10" circ.

Price : \$8.99

[More Details](#)



SKU: H30-ooak

Porcelain Doll Head 5"

3 Faced doll, hand poured and fired, ready to paint. See large images for all faces. Approx 5" high with a 4" face. Eye opening 18mm.

Price : \$8.99

[More Details](#)



SKU: 1623-bigallwell

Porcelain Doll Head 8"

8 Inch porcelain Doll Head, measured from top of head to bottom of shoulder plate. Pretty doll head is quite large and will make up a doll 24-26" tall. Pretty blonde wig, blue eyes with lashes, shoulder plate is 4" across. Head is 13.5" circ.

Price : \$11.99

[More Details](#)



SKU: 875-awvelvet

Porcelain Doll Head 5.5"

5.5 inch porcelain Doll Head. Pretty head on shoulder plate, head is turned to the side. Green inset eyes, and a lovely curly chestnut wig.

Price : \$6.99

[More Details](#)



SKU: H24-ooak

Porcelain Doll Head 3.5"

Shirley Temple head hand poured. Head is 3.5" high, with a 9" circ. Eye opening 13mm

Price : \$5.99

[More Details](#)



SKU: H16-ooak

Porcelain Doll Head 6"

Rotraut Shrott mold, Martina. Head is 6" high, with a 13" circ. Will take a 18 mm eye. Hand poured and nicely painted.

Price : \$12.99

[More Details](#)



SKU: H35-ooak

Porcelain Doll Head 5"

Hand poured and hard fired S.F.B.J. head is approx 5" high with a 15" circ. 18mm eye opening.

Price : \$6.99

[More Details](#)



SKU: 669

Porcelain Doll Head 5.5"

5.5 inch porcelain Doll Head. Pretty head on shoulder plate. Blue inset eyes, and a blonde wig, with flowers and trim. Head is approx 5.5" from top to bottom of shoulder plate, face is approx. 4" high, shoulder plate is approx. 2.5" across.

Price : \$5.99

[More Details](#)



SKU: 1535-ooak

Porcelain Doll Head 2.75"

Pretty antique doll head is approx 2 3/4" high including neck. Paint is missing on face but no chips or cracks . Marking on back 12/0.

Price : \$19.99

[More Details](#)



SKU: 720-cathaymod

Porcelain Doll Head 4.5"

4.5 inch porcelain doll head from top of head to bottom of neck. Beautiful inset eyes, and dark brown wig. Will make a doll approx 16" tall. 11" circ.

Price : \$5.99

[More Details](#)



SKU: H18-ooak

Porcelain Doll Head 5.5"

Elke Hutchins head 5.5" high with a 13" circ. Eye opening is 18mm.

Price : \$6.99

[More Details](#)



SKU: 836

Porcelain Doll Head 6"

Doll head is 6" from top to bottom of neck. Face is 5" long. Circ. is 12". Nice attached wig and blue inset eyes.

Price : \$7.99

[More Details](#)



SKU: 93

Porcelain Doll Head 6"

Adorable doll head will make/repair a baby doll approx 24" tall. Head is 6" top to bottom of neck, 15" circumference.

Price : \$12.99

[More Details](#)



SKU: H15-ooak

Porcelain Doll Head 6"

Shirley temple head 6" high. Large 14" circ. 18mm eye openings. Hard fired, ready to sand and paint. Hand poured.

Price : \$7.99

[More Details](#)



SKU: 1028-24baby

Porcelain Doll Head 6.5"

Adorable doll head will make/repair a baby doll approx 24" tall. Head is 6.5" top to bottom of neck, 15" circumference. Face is 5.5" long

Price : \$12.99

[More Details](#)



SKU: H22-ooak

Porcelain Doll Head 5"

Hand poured doll head is approx. 4" high. 10" circ. with a 15mm eye opening.

Price : \$5.99

[More Details](#)



SKU: 1048-tellonfairy
Porcelain Doll Head 5"

Lovely lady head is 5" from top of head to bottom of shoulder plate. Head is strung, so that it is posable. Her face is approx 3.5" long, with an 8" circ. Will make or repair a 16" doll.

Price : \$7.99

[More Details](#)



SKU: 1050-ooak
Porcelain Doll Head 5"

Pretty lady style doll head is 5" high from top of head to bottom of shoulder plate. Would make up a 16" doll. The head has a circ. of 8.5" and the shoulder plate is 2.25" across. Blue inset eyes and blonde updo wig. Pierced ears.

Price : \$4.99

[More Details](#)



SKU: H12-ooak
Porcelain Doll Head Molded Hair 4.5"

Vintage baby doll head is approx 4.5" high. 11.5" circ. with painted features.

Price : \$7.99

[More Details](#)



SKU: 1551-ooak
Porcelain Doll Head 4"

Nice doll head with dark crimped wig and inset eyes. Approx 4" tall, with a 3" face from forehead to chin. 9" circ. Will make a doll 15-16" tall.

Price : \$4.99

[More Details](#)



SKU: H64-ooak
Porcelain Doll Head 5"

Hilda doll mold. Head is approx. 5" high with a 12.5" circ. and an 18mm eye opening. Hand poured.

Price : \$5.99

[More Details](#)



SKU: 1280-ooak

Porcelain Doll Head Molded Hair 2.5"

Small head is hard fired, hand poured and painted. Approx 2.5" tall with 2" across shoulder plate. 2" face.

Price : \$3.99

[More Details](#)



SKU: 1282-ooak

Porcelain Doll Head Molded Hair 3"

Approx 3" high, with 1.75" across shoulder plate. Face approx 1.5"

Price : \$3.99

[More Details](#)



SKU: 317-ooak

Porcelain Doll Head Molded Hair .75"

Dollhouse size head is approx .75" high . Arms are approx 1" long. .5" across shoulder plate.

Price : \$3.99

[More Details](#)



SKU: H59-ooak

Porcelain Doll Head 5"

Baby doll head Bebe, is approx 5" high with a 12.5" circ. head. Hand poured and painted. Nice.

Price : \$8.99

[More Details](#)



SKU: H60-ooak

Porcelain Doll Head 5"

Sweet little face hand poured and painted with a tear drop. Head is 5" high with an 11.5" circ. face is approx 4" deep. Brown inset eyes.

Price : \$9.99

[More Details](#)



SKU: 362-ooak
Porcelain Doll Head Molded Hair 2.75"
Approx 2.75" high, with 1.25" across shoulder plate.

Price : \$3.99

[More Details](#)



SKU: H25-ooak
Porcelain Doll Head 2"
Small hand poured and painted baby head is 2" tall, with a 5.5" circ.

Price : \$4.99

[More Details](#)



SKU: H40-ooak
Porcelain Doll Head 4"
SFBJ Mold head, 4" high with a 10" circ. Brown inset eyes. Hand poured and painted.

Price : \$7.99

[More Details](#)



SKU: H8-ooak
Porcelain Doll Head 6.5"
Lovely quality doll head. 6.5" total height. Face is 4" high. Circ. approx 11-12". Shoulder plate is 4" across. Roses adorn the applied wig. Green eyes and applied lashes.

Price : \$12.99

[More Details](#)



SKU: H74-ooak

Porcelain Doll Head 3"

Effner mold, head is 3" high with blue inset eyes. Hand painted. 7.5" circ.

Price : \$4.99

[More Details](#)



SKU: H31-ooak

Porcelain Doll Head 3.5"

Hand poured and hard fired head K*R mold 3.5" high with a 9" circ. 11mm eye opening.

Price : \$5.99

[More Details](#)



SKU: 1327

Porcelain Doll Head Molded Hair 1.25"

Hand poured and painted dollhouse size head. Approx 1.25" high with a 3/4" face.

Price : \$3.99

[More Details](#)



SKU: H49-ooak

Porcelain Doll Head 4"

Hand poured doll head approx. 4" high. 10" circ. and will take a 13mm eye.

Price : \$5.99

[More Details](#)



SKU: H27-ooak

Porcelain Doll Head 5"

Stunning hand poured and painted Bell Ceramics head and shoulder plate. Approx. 5" tall, with a 4.25" shoulder plate, 9" circ. Lovely blue inset eyes, very nicely painted.

Price : \$24.99

[More Details](#)



SKU: 1335-ooak

Porcelain Doll Head Molded Hair 1.75"

Vintage porcelain doll kit by Shackman. This man kit includes head , arms and legs and will create a doll approx 7.5" tall.

Price : \$9.99

[More Details](#)



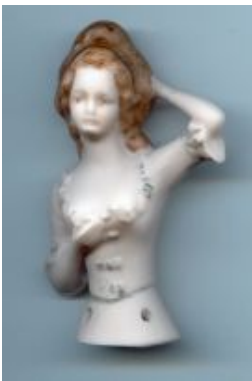
SKU: H39-ooak

Porcelain Doll Head 3.5"

Mold K*R 3.5" high hand poured and hard fired head. 8.5" circ. with an eye opening of 12mm

Price : \$6.99

[More Details](#)



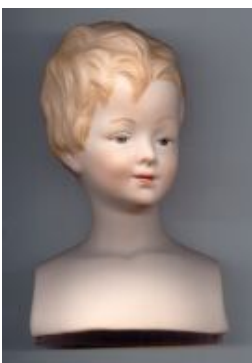
SKU: H2-ooak

Porcelain Doll Head Molded Hair 3"

Pretty hand poured half doll. Total Height approx. 3" with a 3" base circumference.

Price : \$5.99

[More Details](#)



SKU: 1376-ooak

Porcelain Doll Head Molded Hair 5.25"

Beautiful hand poured and painted doll head is approx 5.25" with a 3.25" wide shoulder plate. Circ. is approx 9"

Price : \$8.99

[More Details](#)



SKU: 1377-ooak

Porcelain Doll Head Molded Hair 7"

Beautiful hand poured and painted doll head is approx 7" with a 4" wide shoulder plate. Circ. is approx 8.5"

Price : \$6.99

[More Details](#)



SKU: H11-ooak

Porcelain Doll Head 7"

Pretty doll head on shoulder plate. Approx 7" tall, with a shoulder 4" across. 11" circ. Includes auburn curly wig, hazel inset eyes with applied lashes, and necklace.

Price : \$14.99

[More Details](#)



SKU: H58-ooak

Porcelain Doll Head 3.5"

Hand poured S.F.B.J. mold, approx. 3.5" high. Small firing crack on top of pate will not affect looks or strength. 10" circ. with a 12mm eye opening.

Price : \$3.99

[More Details](#)



SKU: H38-ooak

Porcelain Doll Head Molded Hair 2"

Small porcelain baby head, inverted neck opening. Approx 2" high.

Price : \$2.99

[More Details](#)



SKU: H37-ooak
Porcelain Doll Head 5.5"
Hilary Mold Diana Effner - 5.5" high head with 14" circ. . 18mm eye opening.
Hand poured .

Price : \$8.99

[More Details](#)



SKU: H44-ooak
Porcelain Doll Head 4.5"
Hand poured and fired doll head, ready to paint. 4.5" high with a 10" circ.
Eye opening of 15mm.

Price : \$5.99

[More Details](#)



SKU: H21-ooak
Porcelain Doll Head 6"
Stunning hand poured and painted head. 6" high with a 4" shoulder plate,
circ. is 11". Amazing beautiful blue inset eyes. 2 pce shoulder plate and
head. Sonya mold.

Price : \$24.99

[More Details](#)



SKU: 1425-ooak
Porcelain Doll Head Molded Hair 3.5"
Approx 3.5" high, with 1.5" across shoulder plate. Face approx 1.5"

Price : \$3.99

[More Details](#)



SKU: H52-ooak

Porcelain Doll Head 4"

Shirley Temple head is approx 4" high with a 3.5" face. Head is 9" circ. and eye opening is 15mm.

Price : \$5.99

[More Details](#)

SKU: 237-ooak

Porcelain Doll Head 4.5"

Gumdrop by Boots Tyner head. Poured, fired and ready to paint. Approx 4.5" long with an 11" circ. Face is 4" from forehead to chin. Medium flesh

Price : \$6.99

[More Details](#)



SKU: 268-ooak

Porcelain Doll Head Molded Hair 2"

Hand poured and painted doll head, lady style with back bun. Head is approx 2" high including shoulder plate. Plate is 1" across and face is 1" deep.

Price : \$3.99

[More Details](#)



SKU: 341-ooak

Porcelain Doll Head Molded Hair 1.5"

Hand poured and painted head. Approx. 1.5" high with a 1" face and 1" across shoulder.

Price : \$3.99

[More Details](#)



SKU: 344-ooak

Porcelain Doll Head Molded Hair 1.25"

Hand poured and painted head. Approx. 1.25" high with a 3/4" face and 1" across shoulder.

Price : \$3.99

[More Details](#)



SKU: 1706-ooak

Porcelain Doll Head 1.75"

Hand poured and painted doll face. Flat on the back. Face is 1.75" high.

Price : \$2.99

[More Details](#)



SKU: 1699-ooak

Porcelain Doll Head 2.5"

Sweet little hand poured and painted doll head. Approx 2.5" high with a face size of 1.75" from forehead to chin. Circ. of 5.25"

Price : \$4.99

[More Details](#)



SKU: 436-ooak

Porcelain Doll Head Molded Hair 3.25"

Approx 3.25" high, with 1.5" across shoulder plate. Face approx 1.5"

Price : \$3.99

[More Details](#)



SKU: 1536-ooak

Porcelain Doll Head 2"

Pretty antique doll head is approx 2" high including neck. Face is approx 1.5" . Marking on back is a star with MOA inside, Made in Germany.

Price : \$19.99

[More Details](#)



SKU: 425-ooak
Porcelain Doll Head Molded Hair 2.75"
Approx 2.75" high, with 1.25" across shoulder plate.

Price : \$3.99

[More Details](#)



SKU: 377a-ooak
Porcelain Doll Head 5"
5" hand poured and hard fired baby head. Ready to paint.

Price : \$4.99

[More Details](#)



SKU: H36-ooak
Porcelain Doll Head Molded Hair 5"
White bisque antique repro head. 5" high with a 3.75" shoulder plate. Face is approx 1.75", nice detailing.

Price : \$6.99

[More Details](#)



SKU: H23-ooak
Porcelain Doll Head 4"
Hand poured and painted baby head. Peaches by Boots Tyner mold. 4" high, 10.5" circ. Eye opening 12mm. Nicely painted head.

Price : \$8.99

[More Details](#)



SKU: 394-ooak

Porcelain Doll Head Molded Hair 3.5"

Approx 3.5" high, with 1.75" across shoulder plate. Face approx 1.5"

Price : \$3.99

[More Details](#)



SKU: 1539-istcommunion

Porcelain Doll Head 5.5"

Lovely porcelain doll head with pretty brown curls, inset blue eyes and lashes. Total height 5.5", shoulder is 2.5 inches across, circ. 9" . This head would be suitable for a 16-18" doll.

Price : \$6.99

[More Details](#)



SKU: H10-ooak

Porcelain Doll Head 5"

Lady head on shoulder plate. Approx 5" tall, shoulder is 4" across. Head has a 9" circ. Includes blonde attached wig, blue inset eyes and necklace.

Price : \$7.99

[More Details](#)



SKU: H14-ooak

Porcelain Doll Head 4.5"

Diana Effner Emily mold, head has been cleaned and fired, ready to sand and paint. 4.5" high, 11.5 circ. 13mm eye openings.

Price : \$4.99

[More Details](#)



SKU: H71-ooak

Porcelain Doll Head 3.5"

Hand poured, cleanded and fired doll head approx 3.5" high. 9" circ. and an eye opening of 12mm.

Price : \$4.99

[More Details](#)



SKU: H67-ooak

Porcelain Doll Head 3"

Hand poured and painted head is approx. 3" high with a 7.25" circ. and 10mm eye opening.

Price : \$6.99

[More Details](#)



SKU: H68-ooak

Porcelain Doll Head 5"

Hand poured doll head is approx 5" high with a circ. of 11". Eye opening is 15mm.

Price : \$6.99

[More Details](#)



SKU: H62-ooak

Porcelain Doll Head Molded Hair 5"

Large bylo baby head is approx. 5" high with a 14.5" circ. Eye opening is 16mm. Hand poured

Price : \$9.99

[More Details](#)



SKU: 934-ooak

Porcelain Doll Head 1.75"

Tiny hand poured baby head, hard fired ready for you to paint. Approx 1.75" high with a circ. of 2.5".

Price : \$1.99

[More Details](#)

SKU: 937-ooak

Porcelain Doll Kit 5"

Complete porcelain baby is hand poured and hard fired, ready for you to paint and assemble. Approx 5" when assembled.

Price : \$9.99

[More Details](#)



SKU: H66-ooak

Porcelain Doll Head 4"

Hilda Mold. Head is approx 4" tall with an 11" circ. and an eye opening of 14mm. Hand poured.

Price : \$5.99

[More Details](#)



SKU: H33-ooak

Porcelain Doll Head 4"

Hand poured hard fired head "Peaches" is 10.5" in circ. 4" high. Eye opening is 12mm.

Price : \$5.99

[More Details](#)



SKU: H7-ooak

Porcelain Doll Head 4.5"

Lovely quality doll head. 3.5" total height. Face is 2.5" high. Circ. approx 8". Blue eyes and auburn hair. Shoulder plate is 3.5" across.

Price : \$8.99

[More Details](#)



SKU: H13-ooak

Porcelain Doll Head 6"

Masterfully hand crafted doll head and shoulder plate. Painting is lovely. Approx 6" total height. Shoulder is 4" across, 11" circ. Eye measurement 14mm. Mold is Heidi.

Price : \$24.99

[More Details](#)



SKU: 1499

Porcelain Doll Body 3"

Porcelain Replacement Parts. Porcelain body is 3 inch long, takes a socket head. Designed to have legs come out front such as a sitting doll.

Price : \$0.99

[More Details](#)



SKU: 109

Porcelain Baby Body 3"

Porcelain Doll Repair Supplies. Low fired, replacement body. 3 inch long

Price : \$0.29

[More Details](#)



SKU: 344a-ooak

Porcelain Baby Body 3.5"

Hand poured doll body is approx 3.5" long.

Price : \$4.99

[More Details](#)



SKU: 270-ooak
Porcelain Doll Body 2.5"
Baby body is hand poured and approx 2.5" long

Price : \$4.99

[More Details](#)



SKU: 560-w
Doll Wig Size 10
Doll Making or Repair Supplies. Brown bob wig, has been previously glued but is new. Size 10

Price : \$2.99

[More Details](#)



SKU: W2-ooak
Doll Wig Size 10
Sew'n Love doll company vintage wig. Blonde, bob style. This wig is a coarser saran style than some of the newer doll wigs. New. Size 10.

Price : \$2.99

[More Details](#)



SKU: W4-ooak
Doll Wig Size 10
Sew'n Love doll company vintage wig. Brown, bob style. This wig is a coarser saran style than some of the newer doll wigs. New. Size 10.

Price : \$2.99

[More Details](#)



SKU: 382-ooak
Doll Wig Size 11.5
Pure black, long straight doll wig. Size 11.5" No bangs.

Price : \$6.99

[More Details](#)



SKU: 1710-ooak
Doll Wig Size 7-8
Bell Ceramics curly black afro style doll wig. Size 7-8"

Price : \$4.99

[More Details](#)



SKU: 1094
Gene Doll Hat Box
Authentic Ashton Drake Galleries. Collectible hat box, blue in color, with original cardboard outer box, this is one of the first accessories out for Gene, and was presented as a dealers bonus to promote the new doll.

Price : \$1.99

[More Details](#)



SKU: 1583-ooak
Doll Wig Size 12-13
Kemper Wig. Modacrylic with wash and restyle capabilities. Shirley style in blonde size 12-13"

Price : \$14.99

[More Details](#)



SKU: W3-ooak
Doll Wig Size 10
Sew'n Love doll company vintage wig. Brown, braide style. This wig is a coarser saran style than some of the newer doll wigs. New. Size 10.

Price : \$2.99

[More Details](#)



SKU: W5-ooak
Doll Wig Size 10
Sew'n Love doll company vintage wig. Auburn, braide style. This wig is a coarser saran style than some of the newer doll wigs. New. Size 10.

Price : \$2.99

[More Details](#)



SKU: 132

Doll Wig Size 4

Short Bob style wig by Tallina Wig. Size 4, light blonde.

Price : \$3.99

[More Details](#)



SKU: 1721-tallina

Doll Wig Size 3

Long Flow style wig by Tallina Wig. Size 3, light blonde.

Price : \$3.99

[More Details](#)



SKU: 195

Doll Wig Size 4

Short Bob style wig by Tallina Wig. Size 4, dark blonde.

Price : \$3.99

[More Details](#)



SKU: 197

Doll Wig Size 11

**Beautiful human hair wig, made in Germany. Long straight flow with bangs.
Size 10-11**

Price : \$19.99

[More Details](#)



SKU: W9a-imsco106144

Doll Wig Size 14-15

Lovely bob wig from Imsco. Toni style, size 14-15. Color is called honey.

Price : \$10.99

[More Details](#)



SKU: 1560-ooak

Doll Wig Size 7-8

Bell wig Flora, in black size 7-8". The fibres used in Bell wigs have the look and feel of human hair. They are resylable, manageable, washable and have a stretch cap. Include cleaning instructions.

Price : \$6.99

[More Details](#)



SKU: 1565-ooak

Doll Wig Size 9-10

Bell Wig. Buster Style in Auburn , size 9-10". The fibres used in Bell wigs have the look and feel of human hair. They are resylable, manageable, washable and have a stretch cap. Include cleaning instructions.

Price : \$6.99

[More Details](#)



SKU: 1558-ooak

Doll Wig Size 13-14"

Bell Wig. Suzi Style in black , size 13-14". The fibres used in Bell wigs have the look and feel of human hair. They are resylable, manageable, washable and have a stretch cap. Include cleaning instructions.

Price : \$10.99

[More Details](#)



SKU: W10-imsco102144

Doll Wig Size 14-15

Lovely wispy baby wig from Imsco. Ryan style, size 14-15. Color is called honey.

Price : \$10.99

[More Details](#)



SKU: 1563-ooak

Doll Wig Size 13-14"

Bell Wig. Shirley Style in Blonde , size 13-14". The fibres used in Bell wigs have the look and feel of human hair. They are resylable, manageable, washable and have a stretch cap. Include cleaning instructions.

Price : \$15.99

[More Details](#)



SKU: 1559-ooak

Doll Wig Size 15-16"

Bell Wig. Buster Style in Blonde , size 15-16". The fibres used in Bell wigs have the look and feel of human hair. They are resylable, manageable, washable and have a stretch cap. Include cleaning instructions.

Price : \$10.99

[More Details](#)



SKU: 1564-ooak

Doll Wig Size 11

Imsco World of Dolls Wig. Buster style. Size 11, Medium Brown color. Synthetic fibres.

Price : \$5.99

[More Details](#)



SKU: 1717-ooak

Doll Wig Size 10

Size 10 black curly wig.

Price : \$5.99

[More Details](#)



SKU: 1715-ooak

Doll Wig Size 10

Imsco straight black wig with bangs. Size 10

Price : \$7.99

[More Details](#)



SKU: W8-Imsco102148

Doll Wig Size 14-15

Lovely wispy baby wig from Imsco. Ryan style, size 14-15. Color is called sunset.

Price : \$10.99

[More Details](#)



SKU: W6-ooak

Doll Wig Size 10

Sew'n Love doll company vintage wig. Blonde, braide style. This wig is a coarser saran style than some of the newer doll wigs. New. Size 10.

Price : \$2.99

[More Details](#)



SKU: 1713-ooak

Doll Wig Size 10

Talina's Doll wig size 10, shorter style. Med. Brown.

Price : \$9.99

[More Details](#)



SKU: 1720-ooak

Doll Wig Size 8-9

Doll wig size 8-9 with two side pigtails and bangs. This wig has been previously glued but is new.

Price : \$3.99

[More Details](#)



SKU: W1-ooak

Doll Wig Size 8

Cute little blonde bob style wig. Size 8" circ. This wig is new but has been previously glued.

Price : \$2.99

[More Details](#)



SKU: 1584-ooak

Doll Wig Size 10-11

Monique wig. Annie style in Auburn, size 10-11". Includes WAsHING instructions.

Price : \$6.99

[More Details](#)



SKU: 1588-ooak
Doll Wig Size 11
Dollspart Long Curl Ringlet Bangs size 11". Dark Brown. #1021

Price : \$9.99

[More Details](#)



SKU: W7-ooak
Doll Wig Size 10
Sew'n Love doll company vintage wig. Red curl style. This wig is a coarser saran style than some of the newer doll wigs. New. Size 10.

Price : \$2.99

[More Details](#)



SKU: 1601-ooak
Doll Wig Size 14-15"
Playhouse Doll wig, wash and style. Mary in Light Brown. Size 14-15"

Price : \$9.99

[More Details](#)



SKU: 1606-ooak
Doll Wig Size 15
Dollspart Short Curls With Bangs size 15" in light brown. #1015

Price : \$13.99

[More Details](#)



SKU: 1608-ooak
Doll Wig Size 11
Dollspart Short Curls With Bangs size 11" in light brown. #1015

Price : \$9.99

[More Details](#)



SKU: 1609-ooak
Doll Wig Size 9
Dollspart Short Curls With Bangs size 9" in light brown. #1015

Price : \$9.99

[More Details](#)



SKU: 1722-tallina
Doll Wig Size 3
Long Flow style wig by Tallina Wig. Size 3, dark blonde.

Price : \$3.99

[More Details](#)



SKU: 1723-tallina
Doll Wig Size 3
Long Flow style wig by Tallina Wig. Size 3, auburn.

Price : \$3.99

[More Details](#)



SKU: 1724-sailor
Doll Wig Size 10
Short light blonde bob style. Wig has been previously glued but is new. Size 10

Price : \$2.99

[More Details](#)



SKU: W9-ooak
Doll Wig Size 10
Sew'n Love doll company vintage wig. Blonde, longer flow style. This wig is a coarser saran style than some of the newer doll wigs. New. Size 10.

Price : \$2.99

[More Details](#)



SKU: 1741
Doll Wig Size 3
Tiny blonde wig size 3"

Price : \$3.99

[More Details](#)



SKU: 1742-ooak
Doll Wig Size 8-9
Dark brown ringlette wig size 8-9

Price : \$5.99

[More Details](#)



SKU: 1743-talliana
Doll Wig Size 11
Talliana buster style in auburn. Size 11. Made in Germany.

Price : \$7.99

[More Details](#)



SKU: 1744-talliana
Doll Wig Size 10
Pretty pale blonde baby wig. Size 10. Talliana

Price : \$7.99

[More Details](#)



SKU: 1745-talliana
Doll Wig Size 11
Pretty dark blonde baby wig. Size 11. Talliana

Price : \$7.99

[More Details](#)



SKU: 1746-talliana
Doll Wig Size 6
Pretty pale blonde baby wig. Size 6. Talliana

Price : \$3.99

[More Details](#)



SKU: 1747-imscoyoko
Doll Wig Size 14-15
ImSCO wig yoko style. Size 14-15 long straight black.

Price : \$11.99

[More Details](#)



SKU: 1748-ooak
Doll Wig Size 10
Made in Germany, older blonde curl wig. Size 10

Price : \$4.99

[More Details](#)



SKU: 1753-dollspart
Doll Wig Size 12
Dollspart wig, light brown, curly ringlette style. Size 12

Price : \$11.99

[More Details](#)



SKU: 1754-talliana
Doll Wig Size 10
Short Bob style wig by Tallina Wig. Size10, light blonde.

Price : \$4.99

[More Details](#)



SKU: 1755-ooak

Doll Wig Size 9

Medium brown wig, size 9. Bob style with high ringlettes tied with a pink ribbon.

Price : \$6.99

[More Details](#)



SKU: 1756-ooak

Doll Wig Size 4

Tiny blonde braide with bangs. Size 4

Price : \$2.99

[More Details](#)



SKU: 1757-ooak

Doll Wig Size 4

Tiny brown braide with bangs. Size 4

Price : \$2.99

[More Details](#)



SKU: 1758-dollspart01063

Doll Wig Size 12

Dollspart wig, dark brown. Flowing style with pulled up section. Size 12

Price : \$11.99

[More Details](#)



SKU: 1760-kemper
Doll Wig Size 8-9
Kemper Gibson Girl Style wig. Blonde, size 8-9

Price : \$8.99

[More Details](#)



SKU: 1761-kemper
Doll Wig Size 8-9
Kemper Gibson Girl Style wig. white, size 8-9. Great for Grandma doll.

Price : \$8.99

[More Details](#)



SKU: 1762-kemper
Doll Wig Size 8-9
Kemper Gibson Girl Style wig. Light brown, size 8-9

Price : \$8.99

[More Details](#)



SKU: 1763-kemper
Doll Wig Size 8-9
Kemper Gibson Girl Style wig. Auburn, size 8-9

Price : \$8.99

[More Details](#)



SKU: 1415-ooak
Glass Oval Doll Eyes 24mm Brown
Vintage solid glass eye is approx 24 mm across with a 9mm pupil. The pupil is acrylic and inset into the glass. Great for doll or toy making.

Price : \$4.99

[More Details](#)



SKU: 958
Oval Doll Eyes 13mm Lavender
lat Acrylic Eyes, size 13mm. To measure the diameter of your doll's eyes, the eye socket should be measured in millimeters (mm) from corner-to-corner, as illustrated.

Price : \$1.49

[More Details](#)

SKU: 957

Oval Doll Eyes 13mm Blue

Flat Acrylic Eyes, size 13mm. To measure the diameter of your doll's eyes, the eye socket should be measured in millimeters (mm) from corner-to-corner, as illustrated.



Price : \$1.49

[More Details](#)



SKU: 925

Oval Doll Eyes 8mm Blue

Flat Acrylic Eyes, size 8mm, pretty blue. To measure the diameter of your doll's eyes, the eye socket should be measured in millimeters (mm) from corner-to-corner, as illustrated.

Price : \$1.49

[More Details](#)

SKU: 956

Oval Doll Eyes 13mm Brown

Flat Acrylic Eyes, size 13mm. To measure the diameter of your doll's eyes, the eye socket should be measured in millimeters (mm) from corner-to-corner, as illustrated.



Price : \$1.49

[More Details](#)



SKU: 929

Oval Doll Eyes 8mm Dark Blue

Flat Acrylic Eyes, size 8mm. To measure the diameter of your doll's eyes, the eye socket should be measured in millimeters (mm) from corner-to-corner, as illustrated.

Price : \$1.49

[More Details](#)



SKU: 930

Oval Doll Eyes 8mm Green

Flat Acrylic Eyes, size 8mm, pretty blue. To measure the diameter of your doll's eyes, the eye socket should be measured in millimeters (mm) from corner-to-corner, as illustrated.

Price : \$1.49

[More Details](#)



SKU: 933a

Oval Doll Eyes 10mm Dark Blue

Flat Acrylic Eyes, size 10mm. To measure the diameter of your doll's eyes, the eye socket should be measured in millimeters (mm) from corner-to-corner, as illustrated.

Price : \$1.49

[More Details](#)



SKU: 945

Oval Doll Eyes 12mm Green

Flat Acrylic Eyes, size 12mm. To measure the diameter of your doll's eyes, the eye socket should be measured in millimeters (mm) from corner-to-corner, as illustrated.

Price : \$1.49

[More Details](#)



SKU: 942

Oval Doll Eyes 12mm Brown

Flat Acrylic Eyes, size 12mm. To measure the diameter of your doll's eyes, the eye socket should be measured in millimeters (mm) from corner-to-corner, as illustrated.

Price : \$1.49

[More Details](#)



SKU: 943

Oval Doll Eyes 12mm Dark Blue

Flat Acrylic Eyes, size 12mm. To measure the diameter of your doll's eyes, the eye socket should be measured in millimeters (mm) from corner-to-corner, as illustrated.

Price : \$1.49

[More Details](#)



SKU: 960

Oval Doll Eyes 14mm Lavender

Flat Acrylic Eyes, size 14mm. To measure the diameter of your doll's eyes, the eye socket should be measured in millimeters (mm) from corner-to-corner, as illustrated.

Price : \$1.59

[More Details](#)



SKU: 961

Oval Doll Eyes 14mm Blue

Flat Acrylic Eyes, size 14mm. To measure the diameter of your doll's eyes, the eye socket should be measured in millimeters (mm) from corner-to-corner, as illustrated.

Price : \$1.59

[More Details](#)



SKU: 962

Oval Doll Eyes 9mm Blue

Flat Acrylic Eyes, size 9mm. To measure the diameter of your doll's eyes, the eye socket should be measured in millimeters (mm) from corner-to-corner, as illustrated.

Price : \$1.49

[More Details](#)

SKU: 1413-00ak

Glass Oval Doll Eyes 17mm Brown

Vintage solid glass eye is approx 17 mm across with a 7mm pupil. The pupil is acrylic and inset into the glass. Great for doll or toy making.

Price : \$4.99

[More Details](#)



SKU: 575

Doll Eyes Oval 14mm Blue

Flat Acrylic Eyes, size 14mm. To measure the diameter of your doll's eyes, the eye socket should be measured in millimeters (mm) from corner-to-corner

Price : \$1.99

[More Details](#)



SKU: 583

Doll Eyes Oval 14mm Green

Flat Acrylic Eyes, size 14mm. To measure the diameter of your doll's eyes, the eye socket should be measured in millimeters (mm) from corner-to-corner

Price : \$1.99

[More Details](#)



SKU: 748

Round Doll Eyes 10mm Brown

Round doll eyes from Tallinas Doll Supplies. Acrylic. 10mm size.

Price : \$1.49

[More Details](#)



SKU: 738

Doll Eyes Round 10mm Blue

Round doll eyes from Tallinas Doll Supplies. Acrylic. 10mm size.



Price : \$1.49

[More Details](#)

SKU: 807-ooak

Doll Eyelashes

Doll eye lashes approx 1.5" across, usually one pair can be trimmed to make lashes for two dolls. Light brown.

Price : \$1.99

[More Details](#)



SKU: 904

Porcelain Doll to Dress 7"

Lovely little doll with attached wig, porcelain head, arms and legs. Comes with pantaloons. Approx 7" tall.

Price : \$3.99

[More Details](#)



SKU: 1042

Doll kit Vinyl with a Porcelain Look

Pretty vinyl angel or victorian lady kit, consists of 3" head and arms. Will create a doll approx 14" tall.

Price : \$4.99

[More Details](#)

SKU: 492-ooak

Porcelain Doll to Dress 5.5"

Adorable vintage doll is approx 5.5" tall including hat. She is marked on back BSCO.

Price : \$9.99

[More Details](#)



SKU: 1035-12001-01

Elastic Cord

2 Yards of stinging elastic cord for dolls up to 10", 2mm diameter.

Price : \$2.99

[More Details](#)



SKU: 1243-ooak

Vinyl Clown Head 3"

Assorted vinyl clown heads are 3" high with a 7" circ. Rooted hair assorted colors.

Price : \$0.99

[More Details](#)



SKU: 1293-ooak

Vinyl Doll Kit 2.75"

Vinyl doll kit includes 2 3/4" head with a 2" shoulder and 2.25" arms.

Price : \$3.99

[More Details](#)